

EG SERIES

Oil-Injected Rotary Screw
Air Compressors

The Technological Edge
To Power Your Business

11 - 75 kW / 15 - 100 HP

ELGi[®]
Always Better.



Distributed by



EG SERIES

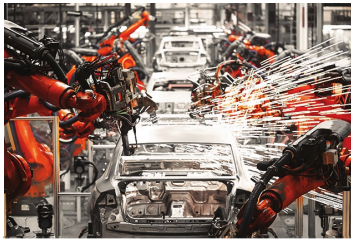
**Superior Energy Efficiency | Low Total Cost Of Ownership
Industry Leading Warranty | Best-In-Class Reliability**

Power consumption on your mind?

Around the world, businesses rely on compressed air to power their manufacturing processes. Increasing power costs and global competition make it more important than ever for manufacturers to choose the correct air compressor.

Automotive, Chemical, Food and Beverage, Fast-Moving Consumer Goods, Cement, Packaging, Pharmaceutical, Textile, and Ceramic Industries and Workshops rely heavily on compressed air. These industries fuel the world's economy.

Applications



Automotive



Food and Beverage



Cement



Packaging



Mining



Agriculture



Textile



Ceramic



Manufacturing

EG SERIES

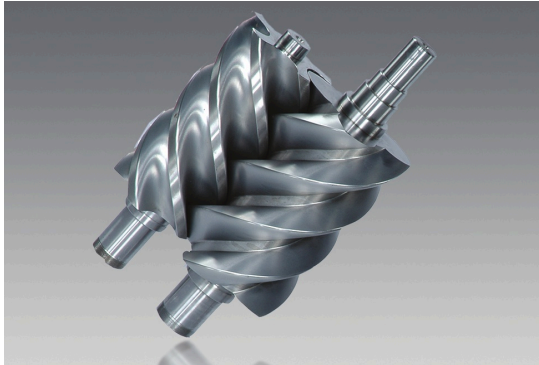
THE ECO-FRIENDLY ENERGY-EFFICIENT COMPRESSOR



Elgi Equipments Limited was established in 1960 as an air compressor and garage equipment manufacturing company. Over the years, the company has exponentially grown its product portfolio and aligned its offering to changing market requirements.

Today, Elgi Equipments Limited is a global air compressor manufacturer with a broad line of innovative and technologically superior compressed air systems. ELGi does business in 120+ countries and is proud of its 2 million+ satisfied customers.

Features and Benefits



Highly Efficient Air end Superior Energy Efficiency

ELGi's unique air ends are equipped with in-house developed η -V profile rotors, with 4/5 lobe combination.

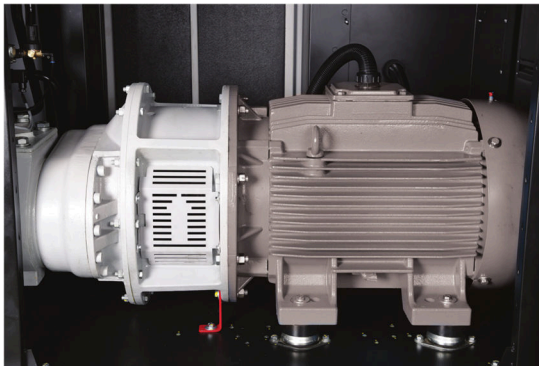
- Low speed
- Highly energy efficient
- 75-160 SP machines use 2 stage air ends for best in class efficiency
- Lifetime warranty*



Advanced Package Design Functional and Aesthetic

The package is configured with subsystems that are designed to:

- Minimize system losses which maximize energy savings
- Ease of service
- Low noise levels



Motors Reliable and Efficient

The motors with a larger core and increased windings offer:

- TEFC severe duty for industrial applications
- Direct coupling with air end increases energy efficiency
- High ambient rating



Intake Valve System

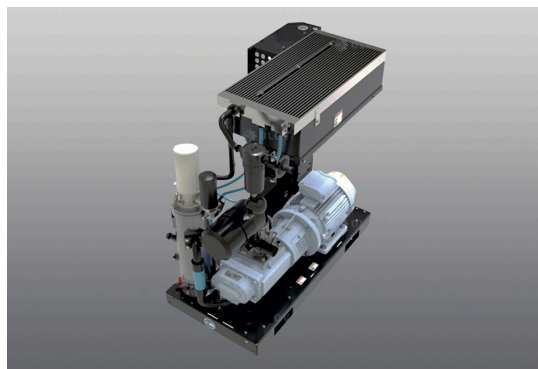
Integrated Blow-down Unit, Solenoid Control, and Actuator.

- Reduces starting load on motor
- Optimal capacity control
- Modulation (55 kW and above) provides smoother and more reliable operation when receiver capacity is limited



Low Oil Carry Over (< 1ppm) Superior Quality of Air

- Three Stage Oil Removal
- Minimal pressure drop
- Increases life of air – oil separator filter
- Reduces environmental impact



Efficient Cooling System Large Cooler and Optimized Fan

- Oversized and bolted cooler design eliminates thermal stresses and extends compressor life
- Lowers power consumption
 - Keeps discharged compressed air temperature low easing the load on downstream equipment



Reliability Under Extreme Conditions Robust and Reliable

- Designed to perform at extreme temperatures
- From cold to hot and from dry to extremely humid conditions with design temperatures up to 115° F
 - Optional outdoor modification and low ambient designs available



Designed for Serviceability Low Maintenance Costs

- Hinged panel design gives easy access
- Stainless control lines and O-ring flanged faces eliminates leaks
- Filtered cabinet extends component life



Safety and Protection

EG Series compressors are designed to ensure the highest level of safety.

High-pressure trip | High-temperature trip | Pressure relief valve | Low voltage trip | Single phase preventer | Reverse rotation prevention.



Best-In-Class Warranty

The EG Series offers lifetime air end warranty and a five year package warranty, ensuring customers receive best-in-class compressed air products along with industry leading warranty coverage.

*In select regions; contact your local ELGi representative for further details; T&C Apply.

EG Series

The Technological Edge to Power Your Business



- **Two-Stage Air Filtration**
Increased Life of Consumables
- **Ease Of Maintenance**
Ease of Access to Components with Removable Panels
- **Neuron 4 Controller**
Advanced, Intelligent Controller for Safety and Reliability
- **Energy-Efficient**
Eco-Friendly Compressors
- **Robust Cooling System**
Reduced Air outlet and Oil Temperature
- **Silent and Aesthetic**
Enclosure Designed to Industrial Standards
- **Excellent Oil Separation OSBIC**
1 PPM Oil Carry Over
- **Optional Built-in VFD**
Compact and Saves Floor Area
- **Safety Compliant Package**
CE Certified
- **Highly Efficient Motor***
Energy Cost Savings

Neuron 4 Advanced Controller



Reports

Neuron 4 is everything that you will need for a superior and reliable compressor operation. The industrial - grade, **7" touchscreen** user interface offers a seamless experience in setting the compressor operational parameters. The Neuron 4 with advanced processor and hardware enables:

- Sequencing of up to 8 compressors
- Pressure schedulers to optimize compressor performance
- An array of communication options and protocols with Ethernet, RS485, CAN, TCP/IP, MODBUS
- Multi lingual with support up to 32 languages
- Mimic display
- Reverse rotation prevention.



Save Energy with Heat Recovery System

ELGi's Heat Recovery System is an accessory that can be added to the EG Series compressor.

The Heat Recovery System can recover up to 76% of the waste heat generated during the compression process which can then in turn be used to heat water.



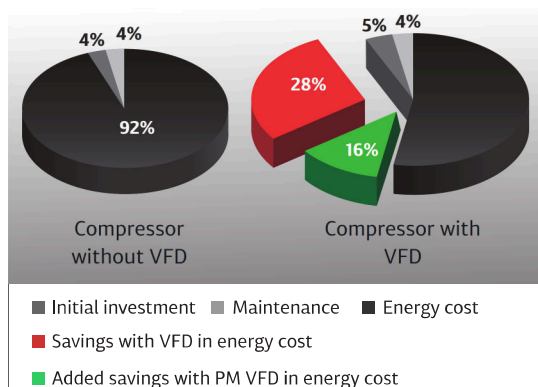
Save Energy with optional VFD

The In-built ELGi Variable Frequency Drives (VFD) matches the compressor output with the demand by varying motor speed which reduces the power consumption and subsequently results in savings.

The VFD helps in eliminating frequent load-unload cycles. In a fixed speed compressor with a Star-Delta starter, the starting current is as high as three times the full load current (FLC). With ELGi VFD, the starting current is less than the FLC.

Advantages:

- Energy savings
- Improved power factor
- Low starting current and hence reduced maximum demand
- Reduced maintenance
- High efficiency combined efficiency drive system



Technical Specifications - Fixed Speed

Model	Motor Power		Working Pressure	Free Air Delivery	Weight	Noise	Dimensions L x B x H
60Hz	kW	hp	psi g	cfm	lbs	dB(A)	in
EG 11	11	15	100	71	1213	69	56x32x58
			125	62			
			150	55			
			175	49			
EG 15	15	20	100	94	1257	69	56x32x58
			125	85			
			150	77			
			175	65			
EG 18	18	25	100	117	1411	69	56x32x58
			125	110			
			150	92			
			175	82			
EG 22	22	30	100	143	1433	69	56x32x58
			125	134			
			150	116			
			175	96			
EG 30	30	40	100	203	2401	69	67x44x62
			115	183			
			125	178			
			150	153			
			175	136			
EG 37	37	50	100	248	2447	69	67x44x62
			115	236			
			125	212			
			150	203			
			175	172			
EG 45	45	60	100	302	2453	69	67x44x62
			115	282			
			125	267			
			150	230			
			175	208			
EG 55	55	75	100	375	3503	69	77.1x49.7x69
			115	355			
			125	343			
			150	288			
			175	271			
EG 75	75	100	100	525	4674	69	81,3 x 53,4 x 77,6
			115	485			
			125	458			
			150	425			
			175	390			

Technical Specifications - Variable Speed

Model	Motor Power		Working Pressure		Free Air Delivery		Weight		Noise	Dimensions L x P x H
60Hz	kW	hp	bar g	psi g	m ³ /min	cfm	lbs	(kg)	dB(A)	in
EG 11	11	15	6.9	100	0.48-2.18	17-77	1283	582	69	53 x 28 x 54
			7.9	115	0.48-2.12	17-75				
			8.6	125	0.48-2.04	17-72				
			10.3	150	0.48-1.59	17-56				
			12.1	175	0.48-1.42	17-50				
EG15	15	20	6.9	100	0.48-2.63	17-93	1283	582	69	53 x 28 x 54
			7.9	115	0.48-2.49	17-88				
			8.6	125	0.48-2.41	17-85				
			10.3	150	0.48-2.18	17-77				
			12.1	175	0.48-1.84	17-65				
EG18	18	25	6.9	100	0.85-3.77	30-133	1477	670	69	59 x 32 x 54
			7.9	115	0.85-3.51	30-124				
			8.6	125	0.85-3.4	30-120				
			10.3	150	0.85-2.92	30-103	2401	1089	69	67 x 44 x 62
			12.1	175	0.85-2.55	30-90				
EG22	22	30	6.9	100	0.85-4.19	30-148	1477	670	69	59 x 32 x 54
			7.9	115	0.85-4.08	30-144				
			8.6	125	0.85-3.96	30-140				
			10.3	150	0.85-3.48	30-123	2401	1089	69	67 x 44 x 62
			12.1	175	0.85-2.95	30-104				
EG30	30	40	6.9	100	0.85-5.52	30-195	2401	1089	69	67 x 44 x 62
			7.9	115	0.85-5.1	30-180				
			8.6	125	0.85-4.81	30-170				
			10.3	150	0.85-4.64	30-164				
			12.1	175	0.85-3.79	30-134				
EG37	37	50	6.9	100	1.7-7.99	60-282	2501	1135	69	67 x 44 x 62
			7.9	115	1.7-7.87	60-278				
			8.6	125	1.7-7.36	60-260				
			10.3	150	1.7-6.2	60-219				
			12.1	175	1.7-5.32	60-188				
EG45	45	60	6.9	100	1.7-8.75	60-309	2501	1135	69	67 x 44 x 62
			7.9	115	1.7-8.13	60-287				
			8.6	125	1.7-7.65	60-270				
			10.3	150	1.7-7.14	60-252				
			12.1	175	1.7-6.09	60-215				
EG 55	55	75	6.9	100	2.19-10.62	77-375	3503	1588	69	77,1 x 49,7 x 69
			8	115	2.19-10.62	77-375				
			8.7	125	2.16-9.71	76-343				
			10.4	150	2.24-8.16	79-288				
			12.1	175	3.77-7.67	133-271				
EG 75	75	100	6.9	100	2.47-14.87	87-525	4829	2190	69	81,3 x 53,4 x 77,6
			8	115	2.44-13.73	86-485				
			8.7	125	2.44-12.97	86-458				
			10.4	150	2.7-12.03	95-425				
			12.1	175	4.22-11.04	149-390				

Service

WE SUPPORT YOU FOR ALL YOUR
EQUIPMENT NEEDS!

Ivys is committed to providing you with top-quality services and a complete range of replacement parts, and spares for your compressed air and gas equipment of all makes and models.

- ◆ Fully certified technicians on call
- ◆ Onsite commissioning
- ◆ Preventative maintenance
- ◆ Servicing and upgrading
- ◆ Replacements and spares for all makes and models

AFTERMARKET SERVICES

- ◆ Custom Service/Maintenance Contracts
- ◆ Desiccants
- ◆ Parts — Filters, Separators, Elements, Drains, Hygrometers, Probes
- ◆ Training — Workshops, Webinars, Certification



Contact our support team at 1-877-469-3232 or visit
our website at **ivysads.com**



ivysads.com

📍 QUEBEC

Head Office and Manufacturing Division

730 Industriel Boulevard
Blainville, Quebec J7C 3V4
CANADA

☎ 450-979-8700 📠 1-877-469-3232

Industrial Division

1120 Michele-Bohec Boulevard, Suite 100
Blainville, Quebec J7C 5N5
CANADA

☎ 450-979-8700 📠 1-877-469-3232

📍 ONTARIO

Ontario Head Office

60 Haist Avenue, Unit 1
Woodbridge, Ontario L4L 5V4
CANADA

☎ 905-850-9888

Guelph Office

5477 Highway 6 North
Guelph, Ontario N1H 6J2
CANADA

☎ 519-837-0450